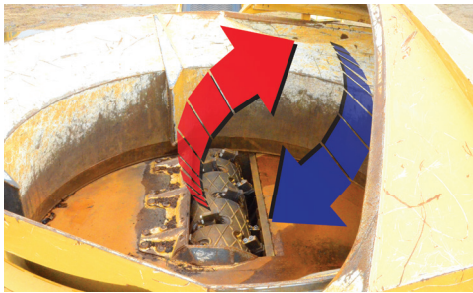


# TG7000 TUB GRINDER



## OPTIMAL CUTTING PERFORMANCE.

The patented Series III duplex drum offers proven cutting performance, and reversible hammers and tips nearly double the wear life of single-sided designs and simplify daily maintenance.



**JOBSITE SAFETY.** The patented thrown object restraint system (TORS) reduces the amount and distance of thrown material debris, and has a smooth underside for better material flow.



**CONVENIENT CONTROL.** Monitor real-time performance and data via the on-rig display or remote control.



**OVERBAND MAGNET.** An optional, overband helps remove ferrous material from the end product.



**JOBSITE EFFICIENCY.** An optional loader cab with grapple allows for a one-man operation, helping reduce labor costs and increase efficiency.



**ENGINE POWER.** A C27 Tier 4F engine provides 950 hp (708 kW) of power to meet your jobsite demands.

# TG7000 TUB GRINDER

## GENERAL DIMENSIONS – NON-LOADER

Max transport length: 43.6' (13.3 m)

Max transport width: 11.92' (3.6 m)

Max transport height: 162" (411.48 cm)

Weight: 78,000 lb (35,380.2 kg)

## GENERAL DIMENSIONS – LOADER

Max transport length: 43.6' (13.3 m)

Max loader reach: 29.5' (9 m)

Max transport width: 11.9' (3.6 m)

Max transport height: 162" (411.5 cm)

Weight: 90,000 lb (40,823.3 kg)

## ENGINE OPTION ONE

Make/model: C27 Tier 4 Final

Gross horsepower: 950 hp (708 kW)

Fuel tank capacity: 500 gal (1892.7 L)

## ENGINE OPTION TWO (FOR LESSER REGULATED COUNTRIES)

Model: Caterpillar C27 Tier 2

Gross horsepower: 950 hp (708 kW)

Fuel tank capacity: 500 gal (1892.7 L)

## FEED SYSTEM

Inside diameter of tub: 10' (3 m)

Inside flare diameter (at tub opening): 13' (3.9 m)

Depth of tub: 4.7' (1.4 m)

## DUPLEX DRUM

Millbox opening: 32" x 72" (81.3 x 182.9 cm)

Drum diameter: 22.5" (57.2 cm)

Number of hammers: 10

Number of tips: 20

## SCREENS

Screen dimensions: 72.4" x 28.1" (183.9 cm x 71.4 cm) with .75" and 1" (1.9 cm and 2.5 cm) thick wear surface

Screen area: 4,069 sq in (26,251 sq cm)

## DISCHARGE SYSTEM – SINGLE BELT DESIGN

Belt length: 24' (7.3 m)

Belt width: 48" (121.9 cm)

Belt design: 330# with V-cleat

## HYDRAULIC SYSTEM

Tank capacity: 100 gal (378.5 L)

Implement pump type: Axial piston, variable displacement

## CONTROLS

Stationary: LCD multifunction

Remote: Multifunction with built-in LCD display; max 300' (91.4 m) operating range

## OPTIONAL LOADER

Loader reach: 29.5' (9 m)

Pedestal/Cab rotation: 370°

Loader lift capacity at full reach: 4000 lb (1814.4 kg)

Loader lift capacity at 10' (3.1 m): 12,000 lb (5443.1 kg)

Grapple type: Multi-tine, continuous 360° rotation

Grapple weight: 1450 lb (657.7 kg)

## OPTIONAL AIR COMPRESSOR

Brand: Mi-T-M

Engine: 11.7 hp (8.7 kW) Honda

Max pressure: 175 psi (12.1 bar)

Max air flow: 29 cfm (0.8 m³/min)

Tank capacity: 30 gal (113.6 L)

## OPTIONS

Super single wheel assemblies

Auto reversing fan

Air ride suspension

Confidence Plus® asset protection program

Damage Defense system

Overband magnet

Work lights

Loader